

DOMO

TECHNICAL WHITEPAPER

# SAP BusinessObjects™ Universe Integration

## Advanced Visualization for the SAP BusinessObjects™ Platform

The SAP BusinessObjects™ business intelligence (BI) platform pulls company data into one centralized location to ensure that every person connected within an organization has trusted, immediate access to the business information they need. It expands data sources and simplifies the deployment and management of BI tools.

Companies who've invested in the SAP BusinessObjects platform can capitalize further on their investment by adding advanced data visualization available through Domo Advanced Builder performance dashboards. Domo Advanced Builder includes a connector for SAP BusinessObjects that lets you pull information out of SAP BusinessObjects universes directly into the rich Domo visual environment. You can present the information in intuitive graphs, gauges, and maps so that you gain a clear and instant understanding of how your company is performing.

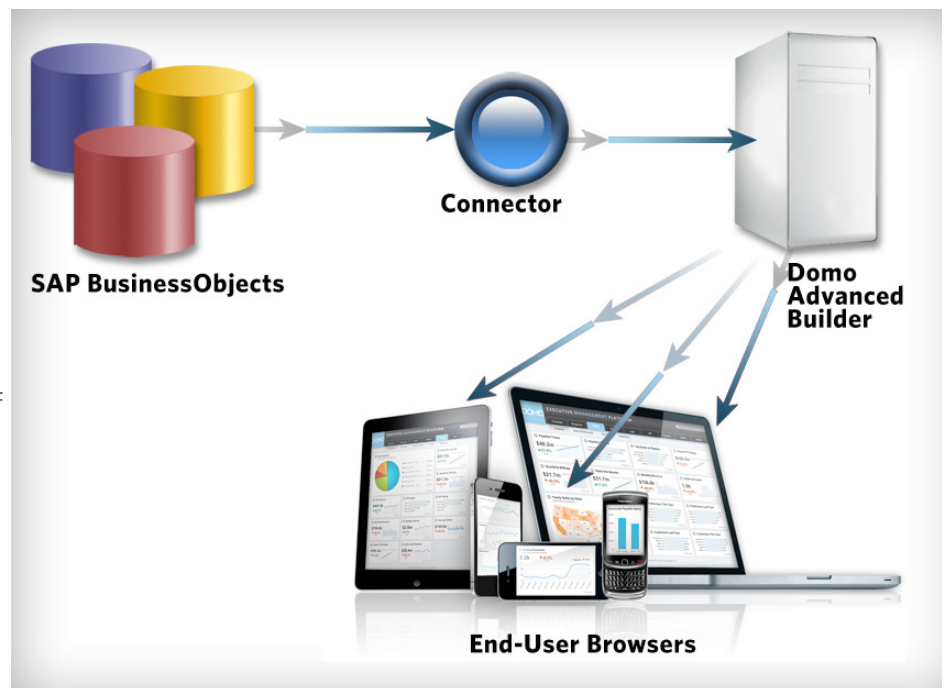
Domo Advanced Builder dashboards offer detailed visuals, increased interactivity and unlimited drill-down capabilities. Domo Advanced Builder gives you the right information at the right time. As a web-based application, it's accessible from anywhere you have Internet access and a browser.

### Domo Advanced Builder and SAP BusinessObjects—A Natural Combination

In developing a connector for the SAP BusinessObjects platform, Domo carefully engineered a technology that takes advantage of all the features of both the SAP BusinessObjects and Domo Advanced Builder environments. The connector translates data from the SAP BusinessObjects extensible markup language (XML) application programming interface (API) to make it readable by Domo's patented

Datafunnel™ technology. With Datafunnels, you can combine data from virtually any source and display it in a single graph, chart, gauge or map.

With this connector, Domo's available data sources include universes designed for the SAP BusinessObjects platform. Universe designers need only create objects, build relationships and create filters on the backend of SAP BusinessObjects just as they've always done. Domo Advanced Builder can select these objects, reports or filters through a simple query interface designed to be familiar to SAP BusinessObjects users.



**Figure 1.** The connector makes it easy to pull data from the SAP BusinessObjects universe, convert it to information users can understand at a glance, and deliver it through a browser.

### Familiar Query Interface for SAP BusinessObjects Users

The query interface wizard for the connector, which is part of Domo's Datafunnel interface, uses the same icons and features you are familiar with using in SAP BusinessObjects, substantially reducing the learning curve. When you launch the Datafunnel wizard, you'll be prompted to select your data source. After choosing to pull from an SAP BusinessObjects universe, the interface options are identical to the options you're familiar with in the SAP BusinessObjects platform. You can choose to create a query from either an existing universe or a report.

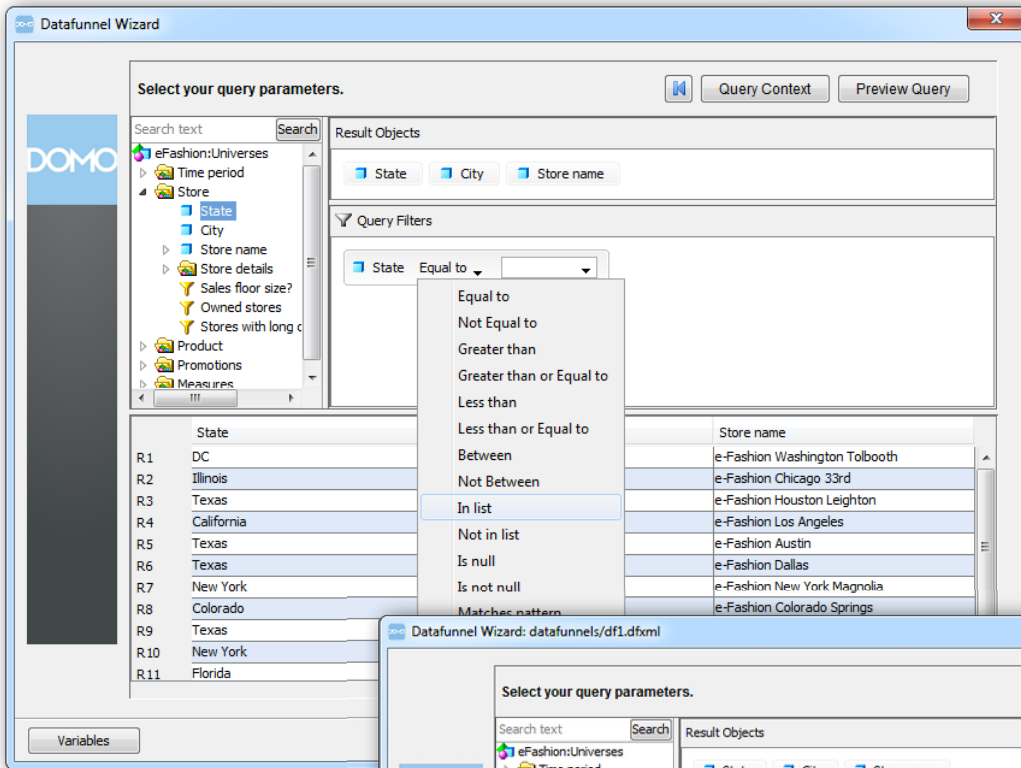


Figure 2. The query interface has icons and features similar to SAP BusinessObjects, making features easy to find and use.

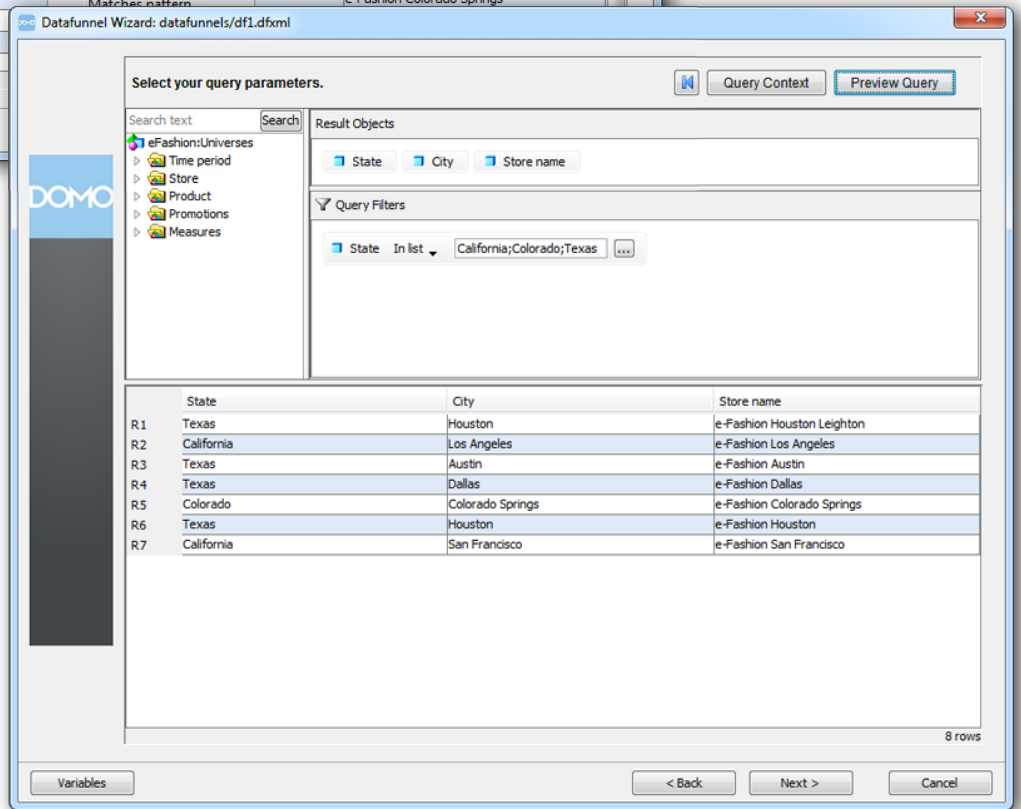


Figure 3. Information shown on the last screen of the Datafunnel wizard is included in the Datafunnel and available to display in a graph, chart or map.

## Ties Other Data Sources to SAP BusinessObjects Data

While the purpose of a BI platform is to unite all company data in one place, in practice, companies rarely collect all data into their BI platform. Usually, departmental databases and spreadsheets still hold valuable data for decision-makers. Whatever the situation in your company, Domo Advanced Builder provides you with the flexibility you need. Maybe you want to build a dashboard on your existing data sources, while working to migrate them to the SAP BusinessObjects platform. Maybe you never want to combine your data sources, but still want to view them on the same dashboard with a unified look between the two. No matter what your plan is for your data, Domo Advanced Builder puts you in charge of how to best display your integrated and connected information.

While the connector pulls SAP BusinessObjects data, the Domo Advanced Builder advantage is that you can also actively connect to any other data source. Simply by creating other Datafunnels, you can pull data from multiple sources into the same graph, chart, gauge or map, which allows you to visualize your SAP BusinessObjects data next to other company data in a single location. You'll have greater control of your organization's data, more freedom to create the visuals you need, and the ability to make intelligent decisions based on as much information as possible.

## Connector Security

With Domo Advanced Builder, you don't need to worry about recreating security policies or roles that already exist in SAP BusinessObjects. Domo Advanced Builder can use the same security system as SAP BusinessObjects, whether it's Lightweight Directory Access Protocol (LDAP), Microsoft ActiveDirectory™, or SAP BusinessObjects Enterprise security, to provide a central security system for all your data resources. Security roles in SAP BusinessObjects automatically apply to objects in Domo Advanced Builder, and users have the same access rights they have in SAP BusinessObjects. When using the Datafunnel wizard, users see only the queries they have access to on their dashboard. Existing

queries to which users have partial access rights are automatically modified to show only the information they should see.

## Conclusion

Domo Advanced Builder's solid integration with SAP BusinessObjects can help you maximize your investment in business intelligence by enabling you to visualize important data and make decisions based on the best information available.

## About Domo

Domo is a new form of BI that helps executives and managers transform the way they run their business. Domo gives executives a way to get business value out of the tens of billions of dollars that's been spent on collecting data through traditional business intelligence systems.

Domo changes the BI user experience from an incomplete and complex process to a consumer-friendly and real-time interaction with all the information users need and want to know to run their business.

Domo combines a powerful backend that connects into and across any enterprise system (CRM, ERP, HR, financials), data repository or current reporting system (data warehouse, Excel) and seamlessly delivers real-time intelligence from those sources into one browser-based view of the business. For more information about Domo, its growing partner ecosystem and how Domo can help you get more value from your BI investments, visit [www.domo.com](http://www.domo.com) or call +1 (800) 899-1000.

